


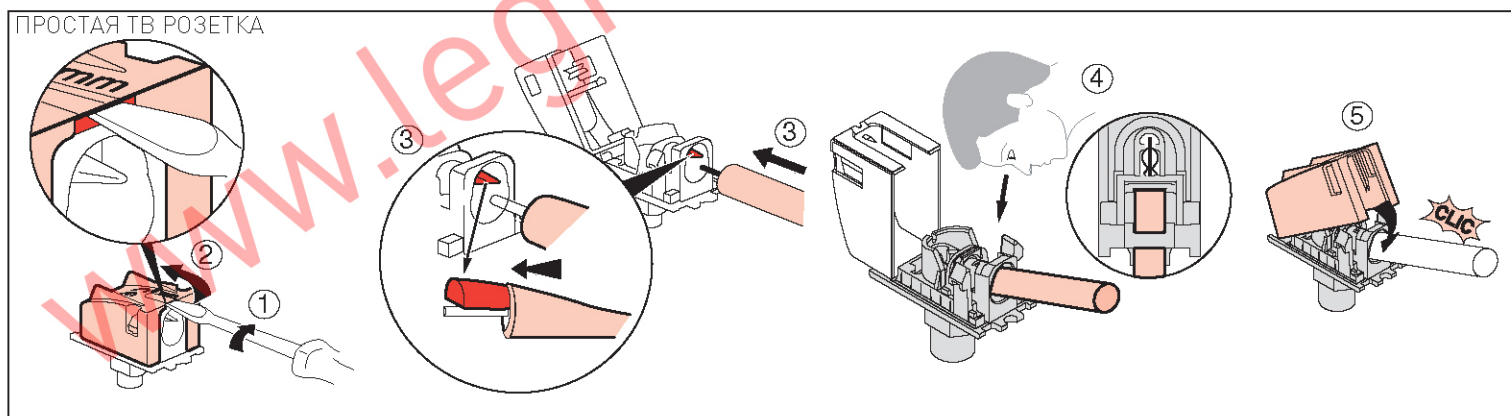
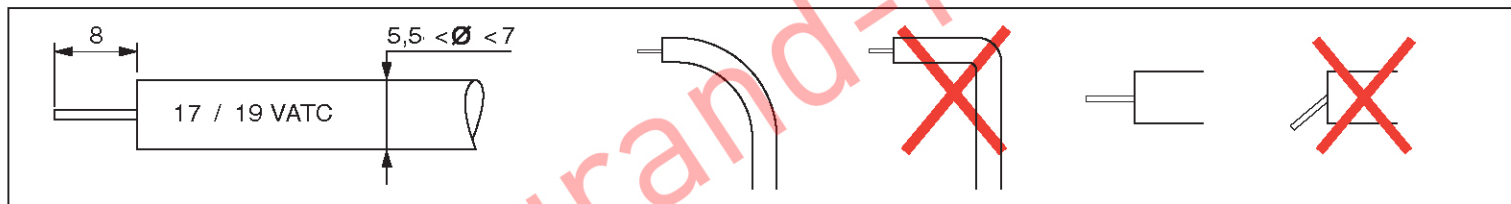


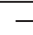


 <b>TV1</b>	Коаксиальный кабель	Затухание		Control	Return path	Channel 1	Channel FM	Channel VHF	Channel UHF	Channel SAT
	<b>Z = 75 Ω</b>		500 mA							
			—	22 / 0,6	4 – 30	47 – 68	87,5 – 108	120 – 470	470 – 862	950 – 2400
		dB	mA	KHz / V	MHz	MHz	MHz	MHz	MHz	MHz
	 TV	$i < 1,5 \text{ dB}$								



	Коаксиальный кабель	Затухание		Control	Return Path	Channel 1	Channel FM	Channel VHF	Channel UHF	Channel SAT
	Z = 75 Ω		500 mA							
				22 / 0,6	4 – 30	47 – 68	87,5 – 108	120 – 470	470 – 862	950 – 2150
	dB	mA		KHz / V	MHz	MHz	MHz	MHz	MHz	MHz
ОКОНЕЧНАЯ	TV	 < dB								
ПРОХОДНАЯ		 < dB								
		i = 10 dB								
		i = 14 dB								

